

# GO ONLINE

27 September -06 October 2021

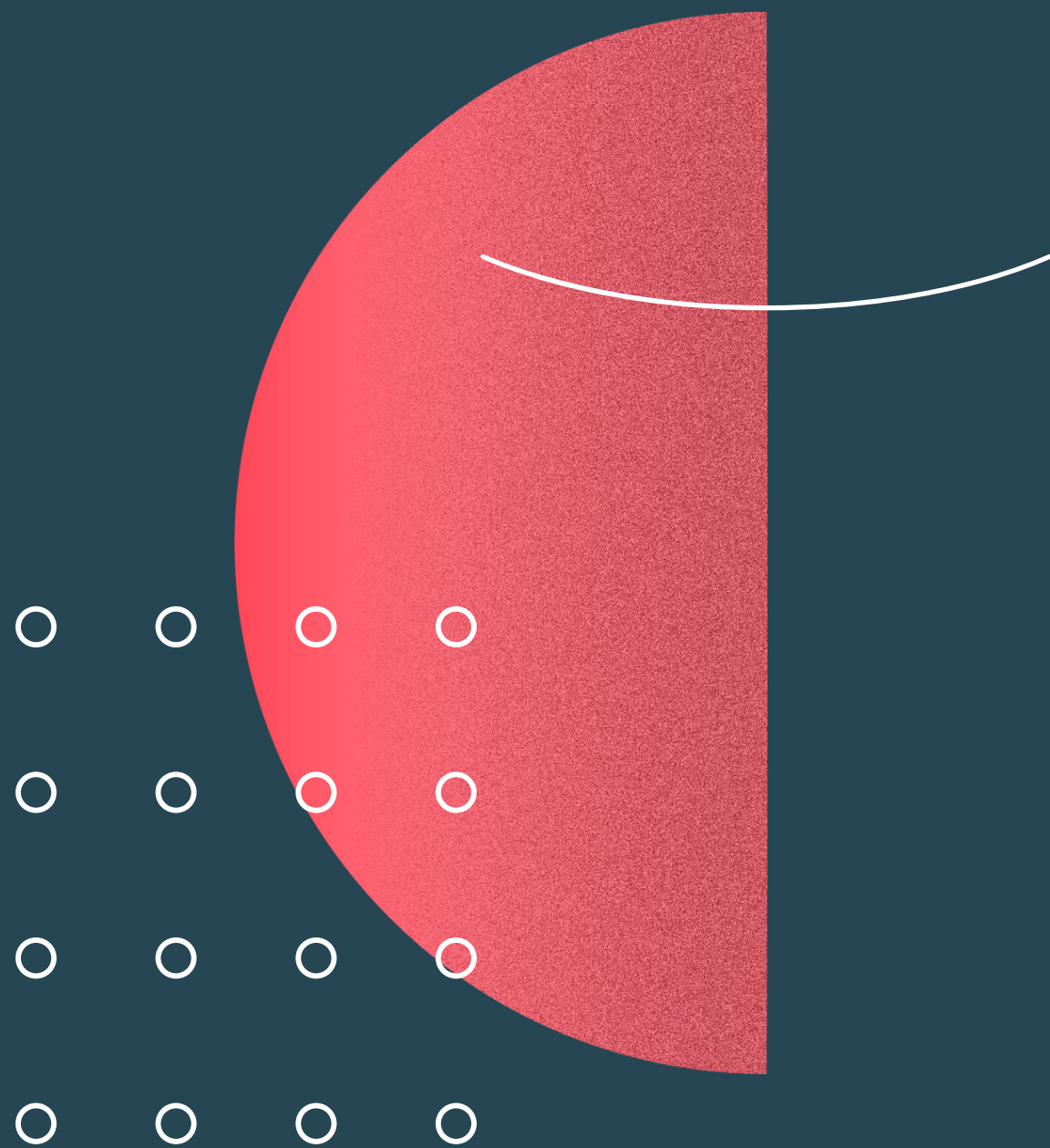


Erasmus+

Náchod, Czech Republic

About

**This TC aims at building competences of youth workers and educators in designing, implementing and evaluating digital and online education programmes.**



# OBJECTIVES

- To discover digital and online education, their perspective, principles, and types;
- To develop participants' competencies in designing, planning, implementing and evaluating digital education activities
- To learn how to create and design content for digital education activities which is visually attractive and engaging for the learner
- To learn about and practice in using various tools, which can be used in content-creation of digital education activities
- To reflect and discover the methodological background of distant learning activities
- To learn about various platforms which can be used in online learning and practice in using them
- To define the peculiarities of using digital education while working with diverse groups especially with young people from rural areas
- To discuss ways of making digital education activities accessible and inclusive
- To promote networking and cooperation between experienced youth workers/trainers
- To raise awareness about digital youth work in the framework of Erasmus+ programme.

# PARTICIPANTS

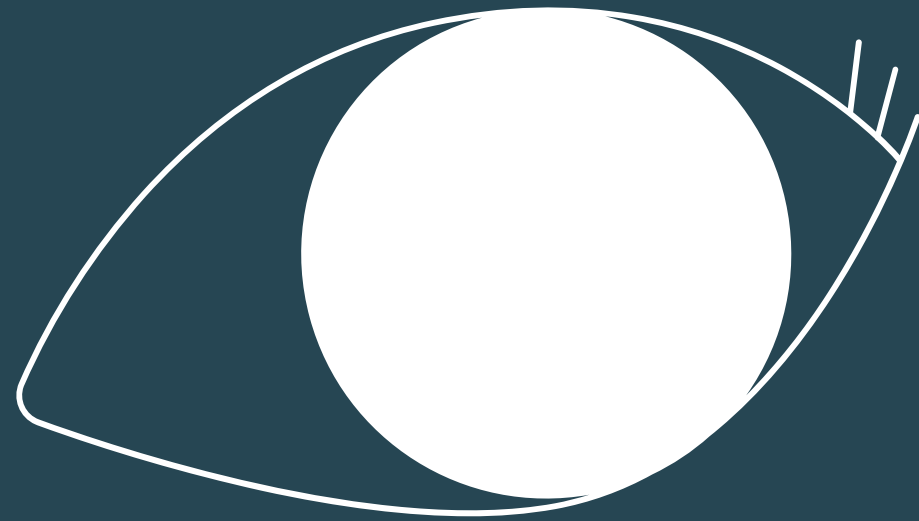
The training course is open for educators - trainers, teachers, facilitators, youth workers, youth leaders.

Participants should be:

- Fluent in English
- 18y.o. or older
- Participant should participate in the whole duration of the TC
- working with youth and/or be motivated to explore topic of distant learning, its peculiarities as well as interested in creation of engaging content design for online activities with the use of digital tools, readiness to share personal and professional experience and to learn in the international group;
- selected participants are in charge of organising a local event (seminar, workshop etc) for own community within the month and a half after TC comes to an end
- selected participant are in charge of dissemination and visibility activities online and offline.





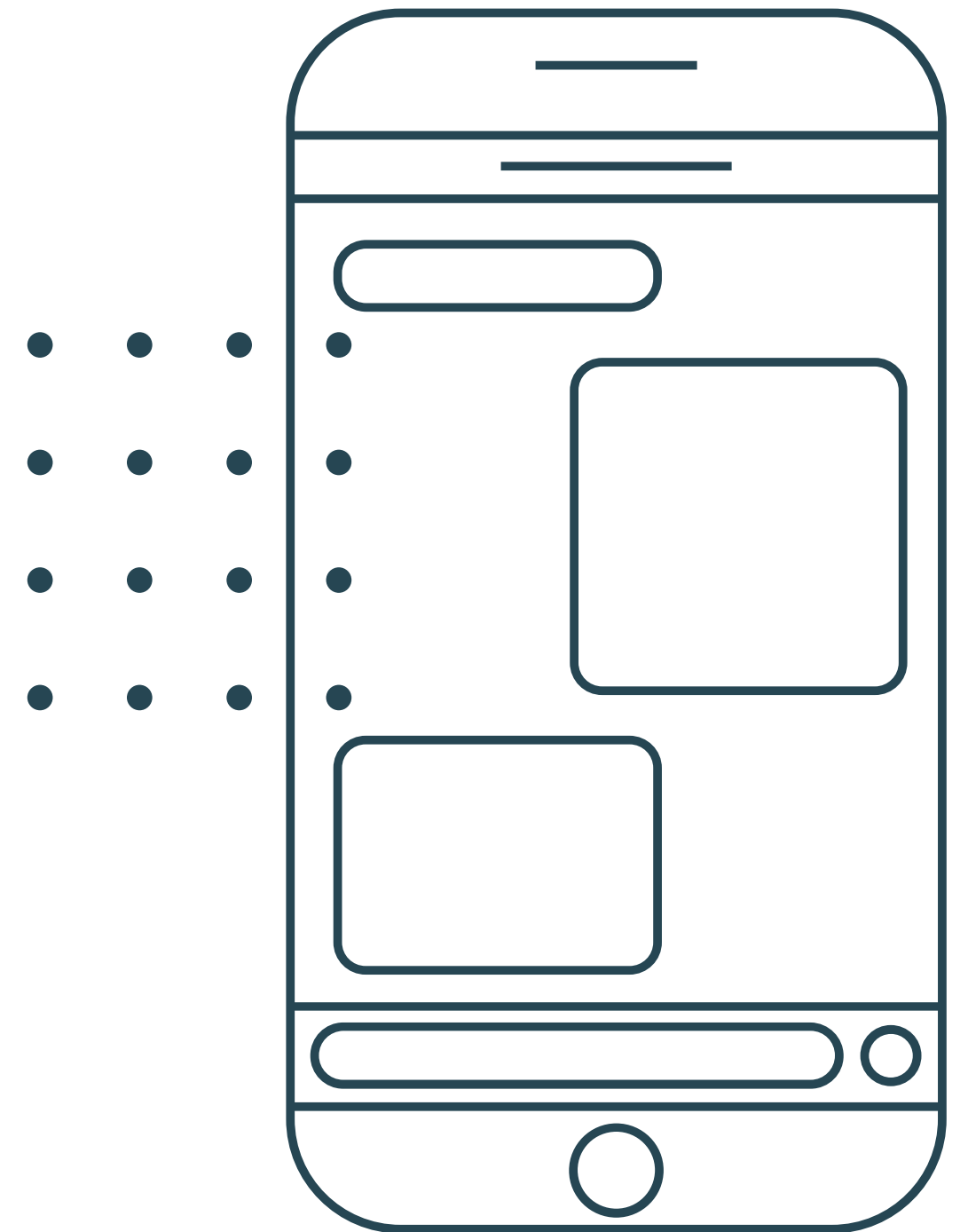


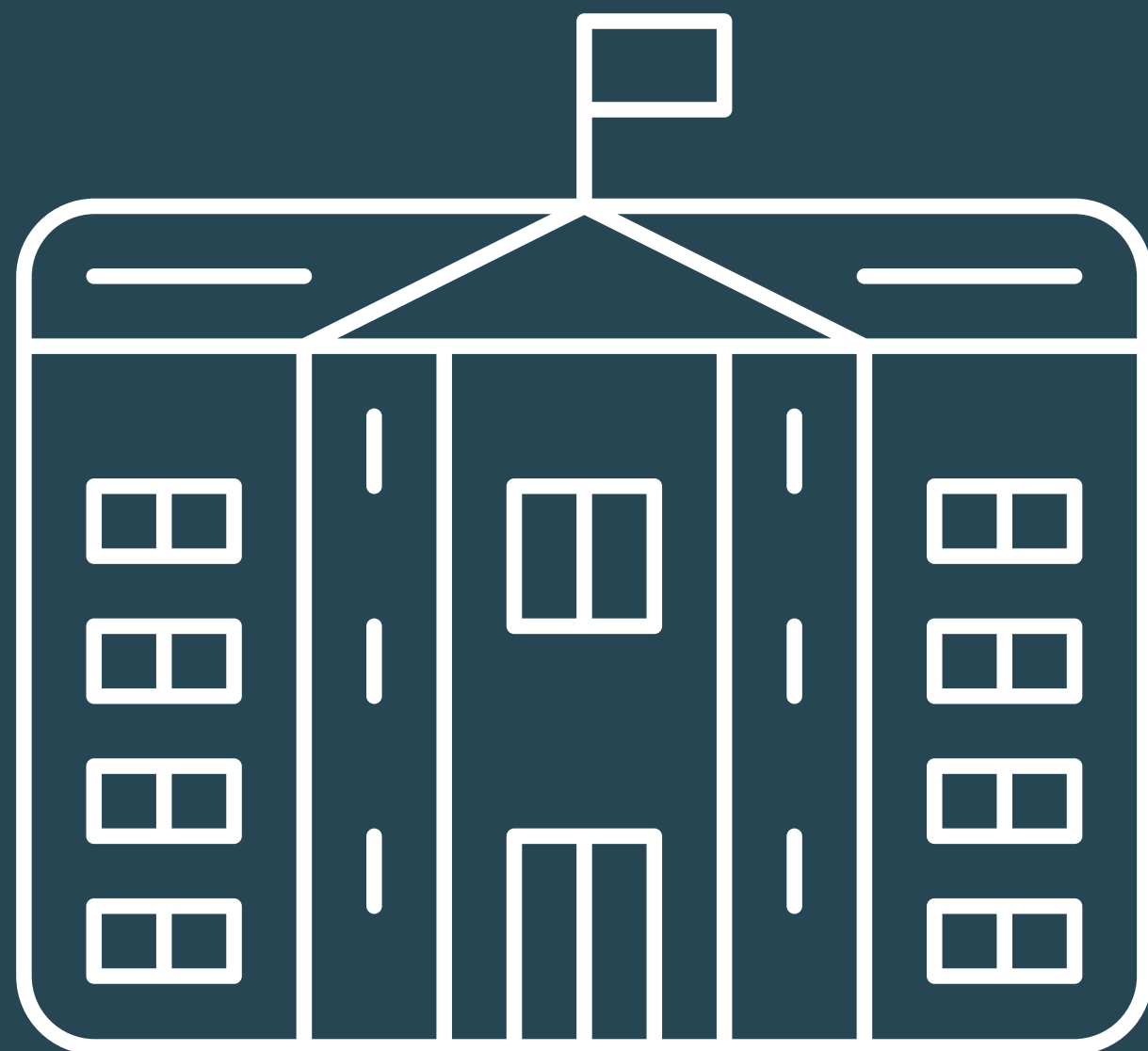
**PRACTICALITIES**

# REGISTRATION FORM AND FB GROUP

Be sure to fill out the form, this will help greatly to facilitate the preparatory work of the organizers: <https://forms.gle/GcBbdTiCwYfUzsHV8>

Don't miss important project news, share our photos and common results in our group: <https://www.facebook.com/groups/198866542184593>





# VENUE

During the meeting You will be accommodated in the hotel 'Hron" in Nahod, Czech

Republic:<https://www.hotelhron.cz/>

Address: Purkyňova 436 547 01 Náchod



# FINANCIAL CONDITIONS

All costs related to the programme, food and accommodation will be covered for participants by organisers. The travel costs will be reimbursed up to reimbursement limit ( see below).

Please note, that there is a participation fee of **30 EUR** per participant, that will be collected at the venue.

## Limits of transportation costs

Czech Republic - 0 EUR per participant

Poland, Slovakia, Hungary - 180 EUR per participant

Spain, Netherlands, Lithuania, Greece, Italy - 275 EUR per participant



Buying all tickets is an obligation of participants (with partners' organizations support).

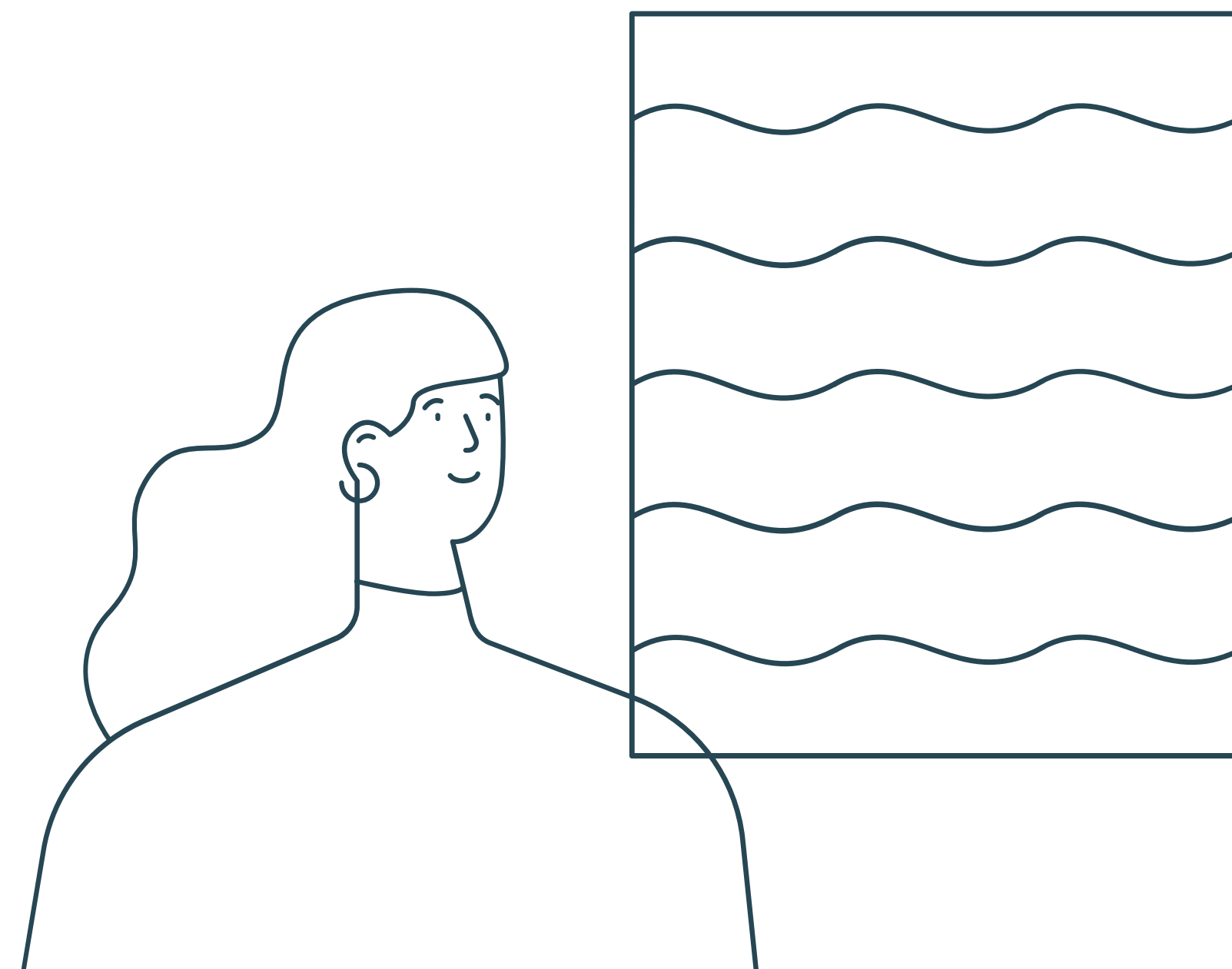
In order to be reimbursed participant has to provide all evidences of travelling: coach/train tickets,boarding passes, invoices etc. as well as the evidence of payment (e.g.bank transcript of payment)

Before purchasing the travel tickets we are kindly ask you to send us potential routes and costs and wait from us a confirmation that they are OK.

The reimbursement will be done via bank transfer therefore we would kindly ask participants to have their bank details ready and with them to submit during the training course. (Name and full address of the account holder, Name and full address of the bank,IBAN, SWIFT (BIC)

If you want to come earlier, leave later from Czech Republic and still receive your reimbursement, it's possible to arrive max. 2 days in advance and leave max. 2 days after the training finishes. Participants need to take care of their stay by themselves in these days.

# REIMBURSEMENT CONDITIONS



# INSTRUCTIONS FOR TRAVEL



Nearest airports to Nachod are:

Prague (Czech Republic)

Brno (Czech Republic)

Pardubice (Czech Republic)

Wroclaw (Poland)

In order to get to Náchod you'll need to travel from one of the above cities by train/ bus.

To check the trains and buy train tickets:

<https://www.cd.cz/en/default.htm>

To look for bus connections:

<https://www.studentagency.eu/en/>

<https://www.flixbus.pl>

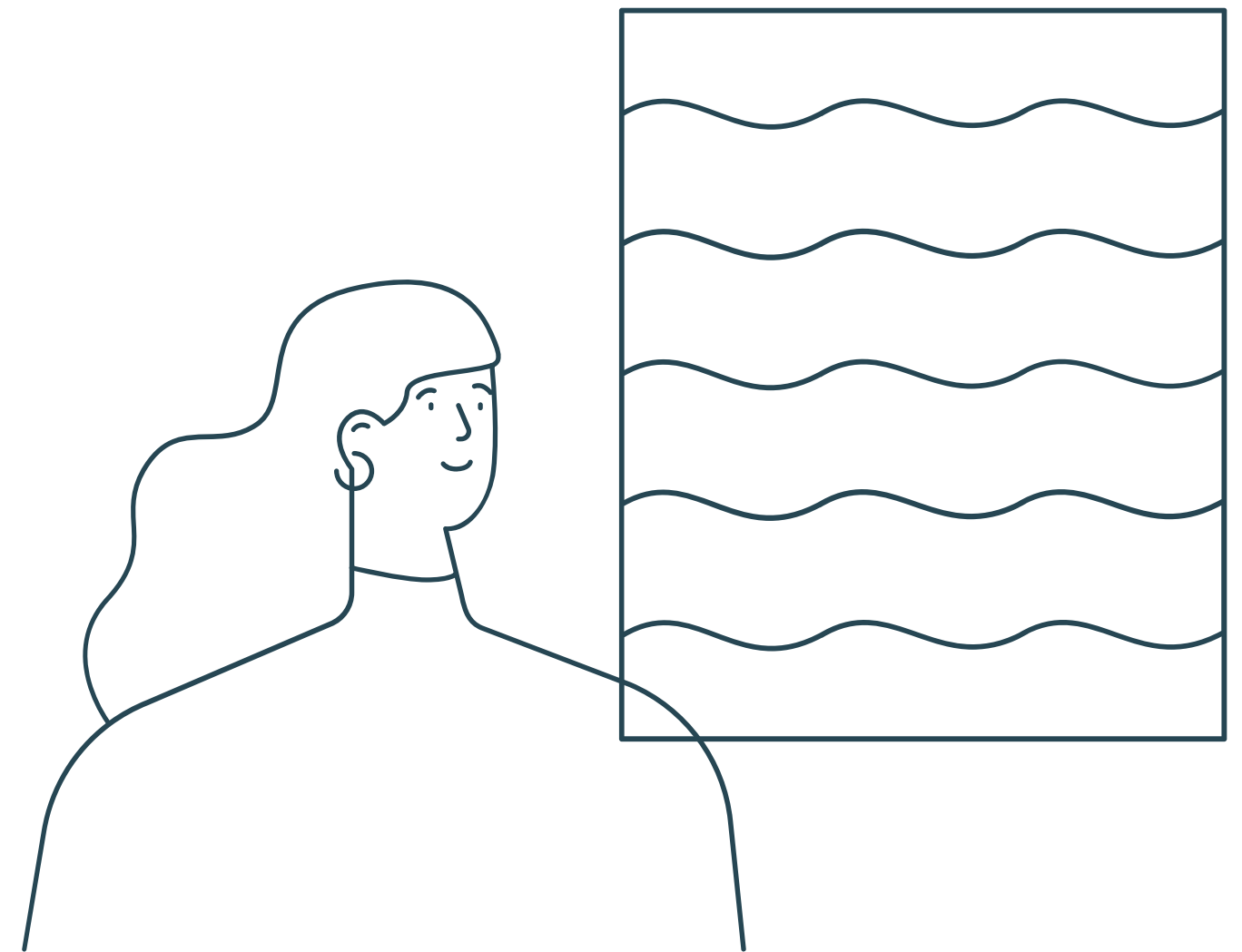
<https://www.omio.com>

To check the timetables of all the transport: IDOS app

- Missing or lost tickets will not be reimbursed
  - Taxi or petrol costs are not reimbursed
- Boarding passes for all the parts of air-travel are essential for reimbursement
- "Booking paper" alone is not enough (invoices are required)
  - Following the guidelines of the Erasmus+ / YIA Program and internal regulations, the travel must be released by the participants on the direct way within maximum 2 days. In case of long pauses or indirect routes (holiday travel), there is no reimbursement of travel costs!

NOTE that, Except illnesses, you are expected to participate FULLY in all activities.  
Unauthorized absence from activities and workshops is not permitted.  
If less than 90% of the program is attended, it will not be possible to be reimbursed for the travel costs.

# OTHER IMPORTANT DETAILS FOR REIMBURSEMENT



# WHAT TO BRING



First of all bring yourself with all your best talents and ideas to share.

- Comfortable clothes (tracksuit, comfy t-shirts for both indoor and outdoor activities) and shoes for workshops depending on weather, slippers.

- Traditional food, drink and souvenirs for intercultural evenings activities.

- Initiatives how to spend the free time together or even complement the agenda.

- Favorite board/ card/ physical games

- We will also have an Open space during which you can discuss any topics you would like to. Share with us any ideas you have -good practices, methods, success stories etc.

- Any medicaments you use and will be needed for you while staying.



**IF THERE'S ANY PERSON WITH SPECIAL DIET/ ALLERGIES, PLEASE INFORM US ABOUT THIS (VIA PARTICIPATION FORM ATTACHED ABOVE THE INFOPACK). IT IS ESPECIALLY IMPORTANT FOR US TO KNOW ABOUT DIETS/ ALLERGIES/ SPECIAL NEEDS IN ADVANCE.**



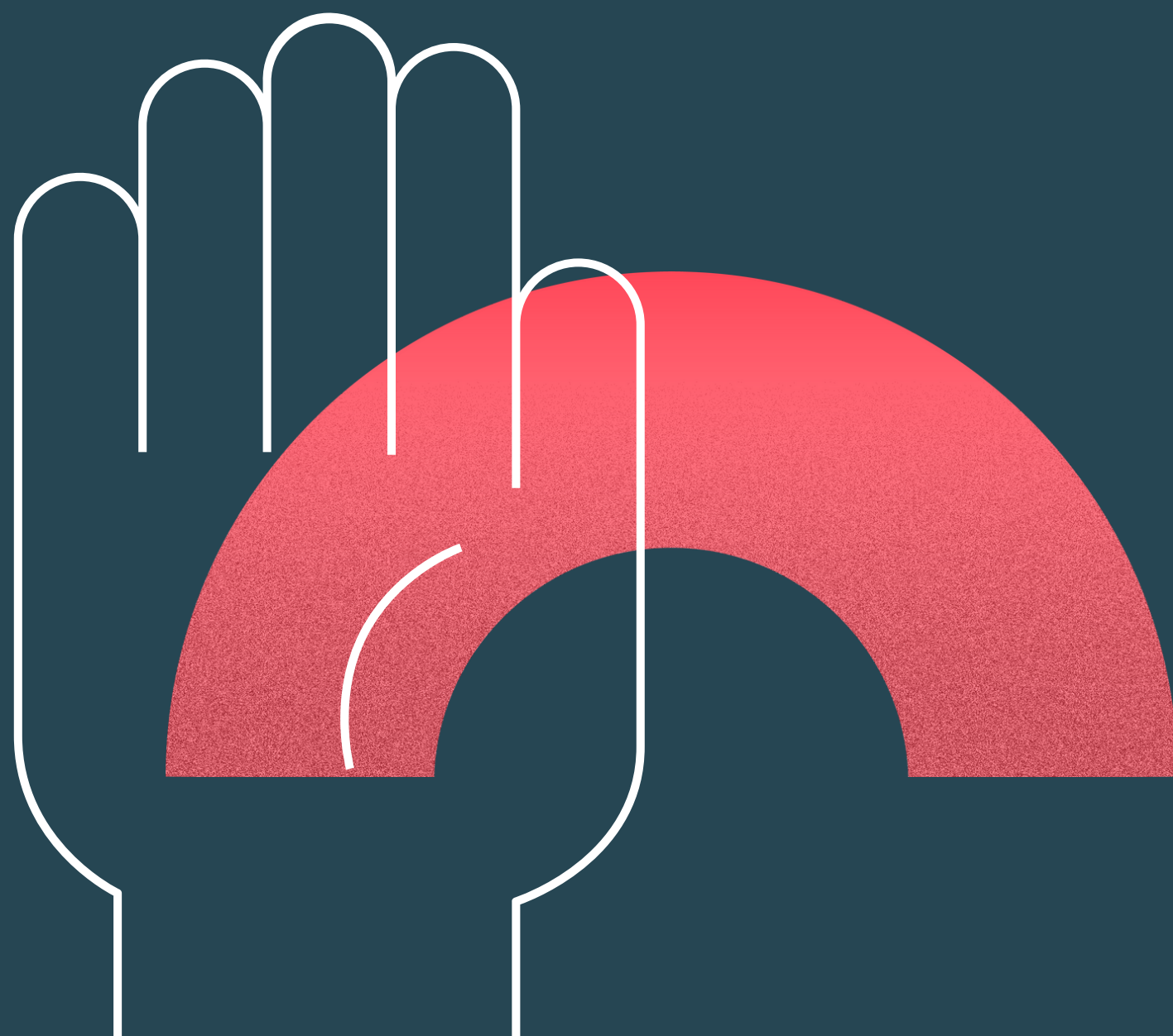


DUE TO UNSTABLE SITUATION WITH COVID- 1 9 IT'S OBLIGATORY TO HAVE A HEALTH INSURANCE AND TRAVEL INSURANCE.

WE WOULD KINDLY ASK PARTICIPANTS TO BRING THEIR INDIVIDUAL PROTECTION (E.G. MASKS) AND ANY OTHER MEDICINE THEY FEEL NEEDED.

PARTICIPANTS ARE THEMSELVES RESPONSIBLE TO GET A TRAVEL INSURANCE. IF THERE'S ANYONE WHO USES MEDICINE SHOULD BRING WITH THEMSELVES. WE DON' T GIVE ANY MEDICINES AND WE DON' T COVER INSURANCE FEES.

DURING THE MEET ING WE WILL TAKE CARE OF SAFETY (E.G. FEVER MEASUREMENTS AND USAGE OF SANITIZERS) AND FOLLOW THE RECOMMENDATIONS ANNOUNCED BY CZECH MINISTRY OF HEALTH, IF ANY BY THAT TIME. WE HOPE THAT SITUATION WITH COVID-19 WILL NOT AFFECT OUR EVENT AND WE ALL BE MEETING VERY SOON.



# COVID TESTS/ RULES

If you have a COVID-19 certificate ( which proves that you have been fully vaccinated more than 14 days ago by one of EMA approved vaccines or if you had COVID-19 in the last 180 days ) - you do not need to undergo any PCR tests.

If you haven't been vaccinated, you need to undergo testing.

More details for entry requirements:

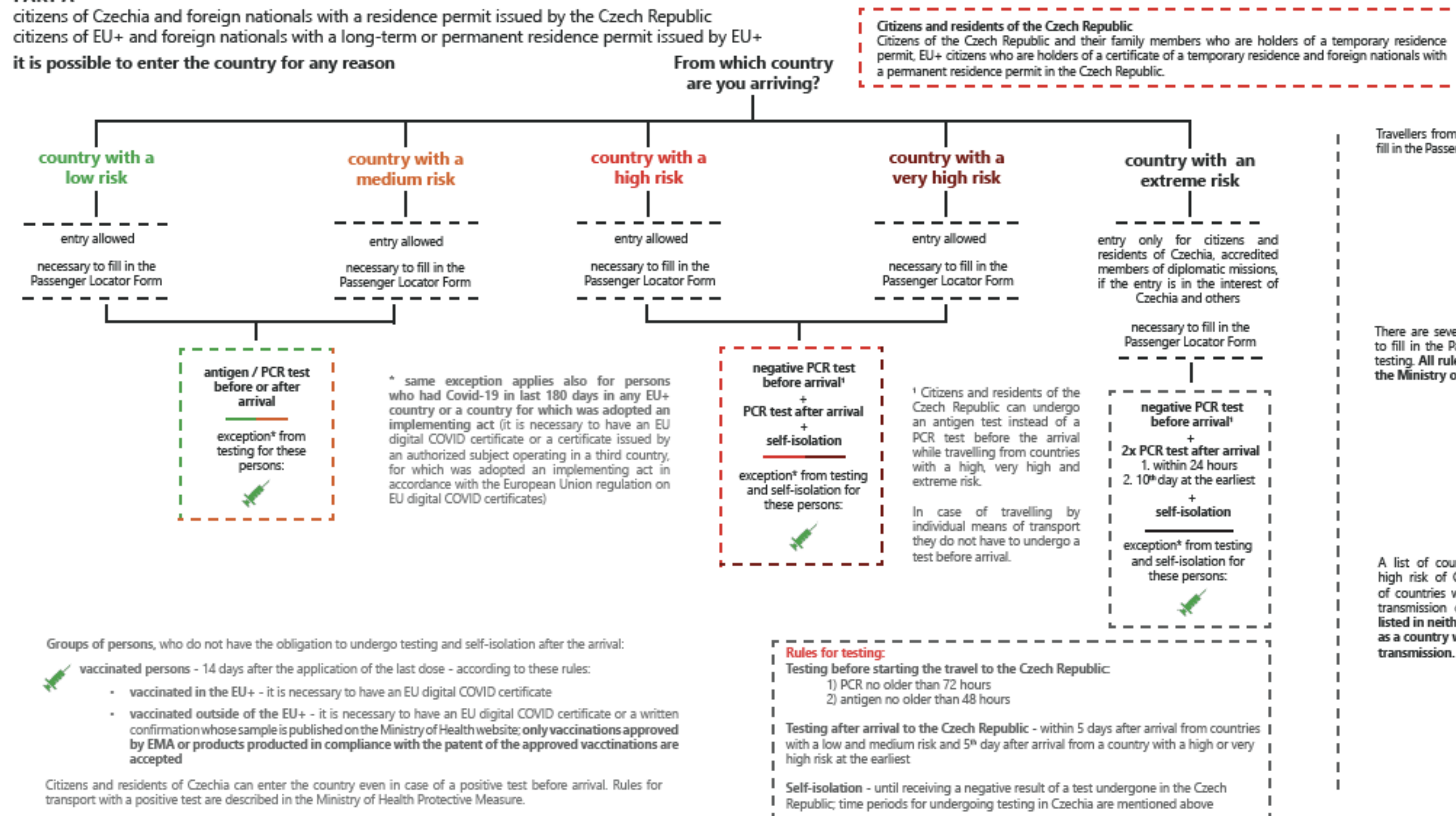
<https://www.visitczechrepublic.com/en-US/926179fc-1601-4cf8-b201-0b33b3878f08/page/covid-19>

[https://www.mzv.cz/jnp/cz/cestujeme/aktualni\\_doporuceni\\_a\\_varovani/nova\\_pravidla\\_navratu\\_do\\_cr\\_od\\_9\\_7\\_2021a.html](https://www.mzv.cz/jnp/cz/cestujeme/aktualni_doporuceni_a_varovani/nova_pravidla_navratu_do_cr_od_9_7_2021a.html)

## Rules for entry and return to the Czech Republic (as of 11<sup>th</sup> September 2021)

### PART A

citizens of Czechia and foreign nationals with a residence permit issued by the Czech Republic  
citizens of EU+ and foreign nationals with a long-term or permanent residence permit issued by EU+  
it is possible to enter the country for any reason



Travellers from all countries have an obligation to fill in the Passenger Locator Form before the arrival.



There are several exceptions from the obligation to fill in the Passenger Locator Form or undergo testing. All rules and exceptions can be found in the Ministry of Health Protective Measure.



A list of countries with a low, medium and high risk of Covid-19 transmission and a list of countries with an extreme risk of Covid-19 transmission can be found here. A country listed in neither list of countries is considered as a country with a very high risk of Covid-19 transmission.

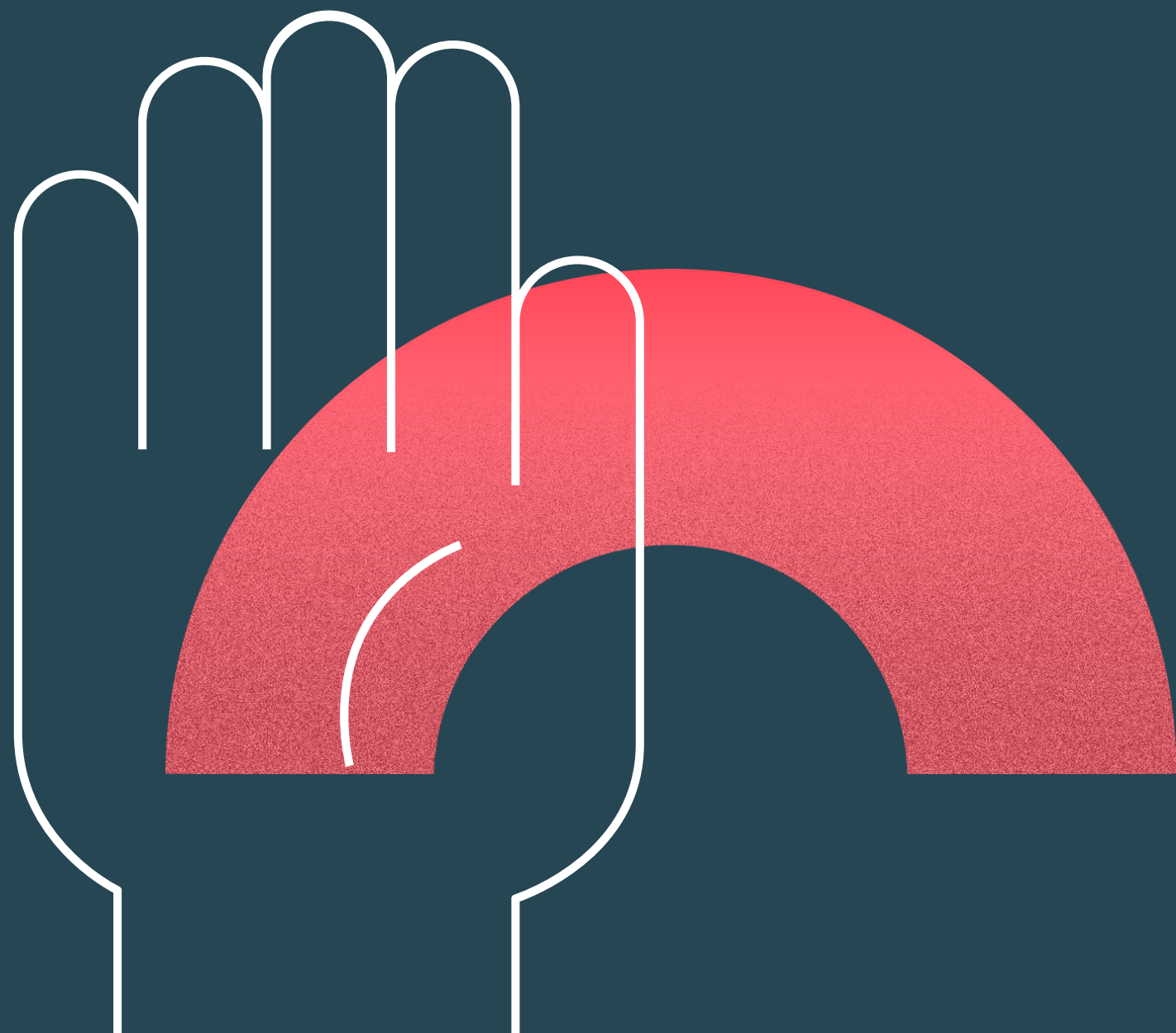


Groups of persons, who do not have the obligation to undergo testing and self-isolation after the arrival:

- vaccinated persons - 14 days after the application of the last dose - according to these rules:
  - vaccinated in the EU+ - it is necessary to have an EU digital COVID certificate
  - vaccinated outside of the EU+ - it is necessary to have an EU digital COVID certificate or a written confirmation whose sample is published on the Ministry of Health website; only vaccinations approved by EMA or products produced in compliance with the patent of the approved vaccinations are accepted

Citizens and residents of Czechia can enter the country even in case of a positive test before arrival. Rules for transport with a positive test are described in the Ministry of Health Protective Measure.





# MORE ABOUT COVID TESTS

The expences for the Covid-19 tests for are not covered from the project's budget.

Please check if your insurance cover the expences for the tests.

The expences from Covid-19 tests could be reimbursed together with the travel costs up to the travel limit.

Please check the condition for traveling back to your country from Czech Republic.

We can not cover your expences related to the quarantine in Czech Republic in case you got positive results.

BEFORE the TC (September 2021):

- Check the conditions for traveling to Poland and back to your country.
- To purchase and collect all travel tickets after consultation and agreement with the hosting organization
- Get familiar with youth situation in your local community
- Fill in the participation form on-line

DURING the TC (27 September -06 October 2021):

- To deliver all travel documents to the hosting organization
- To actively participate in all workshop sessions (100% of activities)
- To provide on going dissemination of the results of the mobility (posts in Social Media, videos,BlogPosts etc.)

AFTER the TC (October-November 2021)

- To disseminate results, both off- and on- line (send all the documentation- pictures, descriptions to KURO Hradec Králové)
- To implement a local workshop with local youth in participant's environment using outdoor education
- To fill in a EC's survey that will be delivered via participants' e-mails

# TO DO LIST





# CONTACTS

EMAIL ADDRESS:      [gorunovavera@gmail.com](mailto:gorunovavera@gmail.com)  
[eventskuro@gmail.com](mailto:eventskuro@gmail.com)

PHONE NUMBER:      +48518044164 Vera  
+420704327159 Alla

